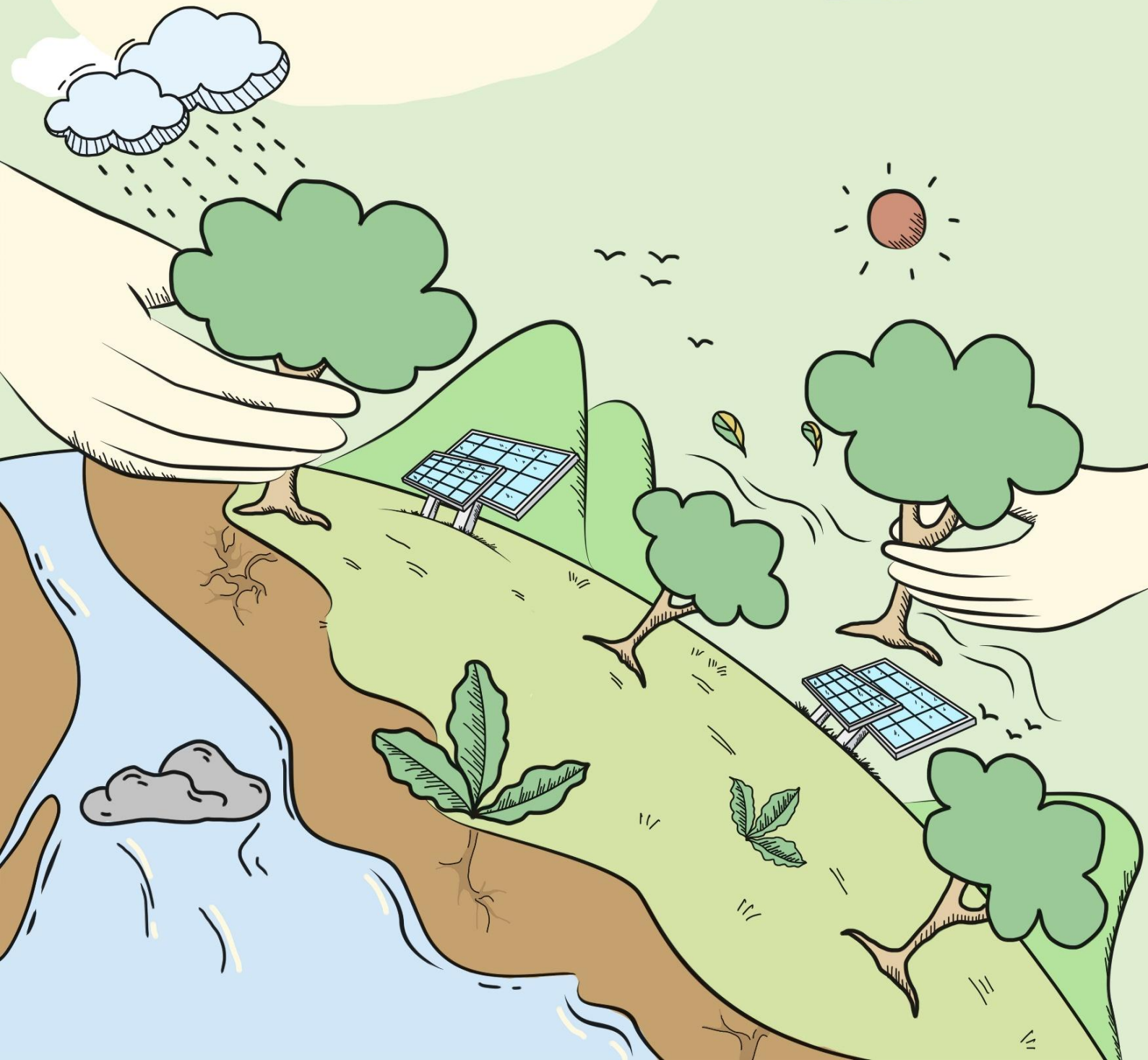


# Coping with Change



What changes have happened in your community in the past 10 years?



What has changed in the natural environment?

What has changed in the social composition of the community?

What has changed in the economic situation?

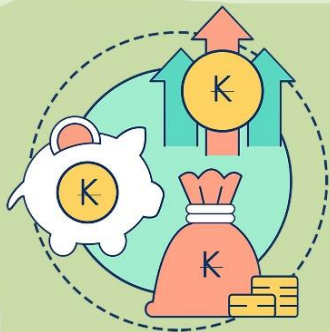


# 3 Three threats to livelihoods



Climate change

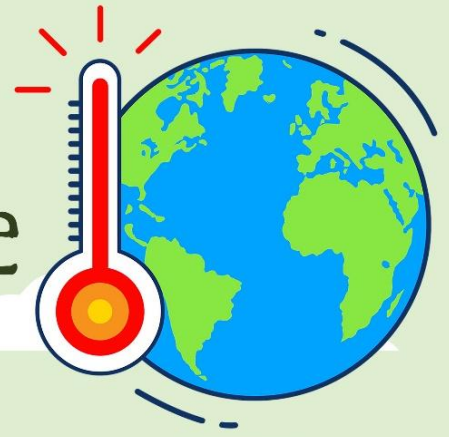
Biodiversity loss



Economic instability

# 4

## Climate change



Resulting Vulnerabilities:

### Extreme weather

Examples of impacts on rural communities:

Floods



Pests



Droughts



Landslides



What have been the extremes in your community? What did you do about it?

What do you think can be done to reduce vulnerability to climate change?

# Climate change



"What ideas do you have for reducing vulnerability to extreme weather?"

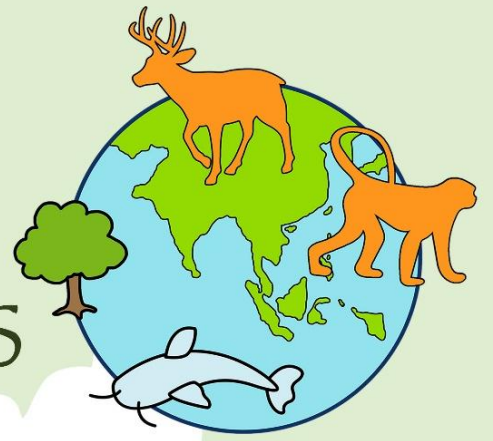


## Examples of strategies for improving resilience:

- ◊ Land use planning
- ◊ Upgrading irrigation system
- ◊ Improving drinking water supply
- ◊ Sloping land technology

6

# Biodiversity loss



Resulting Vulnerabilities:

## Fewer natural resources

Examples of impacts on rural communities:  
Less wild food, resource conflict.



What biodiversity has been lost in your community?

What do you think can be done to reduce vulnerability to biodiversity loss?

# Biodiversity loss



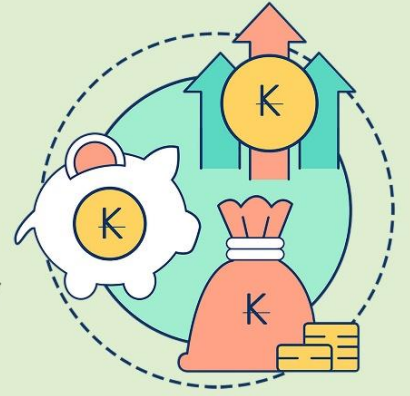
What ideas do you have for protecting biodiversity, including wild food?

## Examples of strategies for improving resilience:

- ◆ Forest-friendly production systems
- ◆ Village conservation zones
- ◆ Improved cattle management
- ◆ Fuel-saving stoves



# Economic instability



Resulting vulnerabilities:

## Price fluctuations

Examples of impacts on rural communities:

Loss of income, household debt

Loss of income



What marketing problems have you experienced?

What do you think can be done to reduce vulnerability to economic instability?





# Economic instability

What ideas do you have for improving your ability to cope with marketing problems and price fluctuation?

## Examples of strategies for improving resilience:

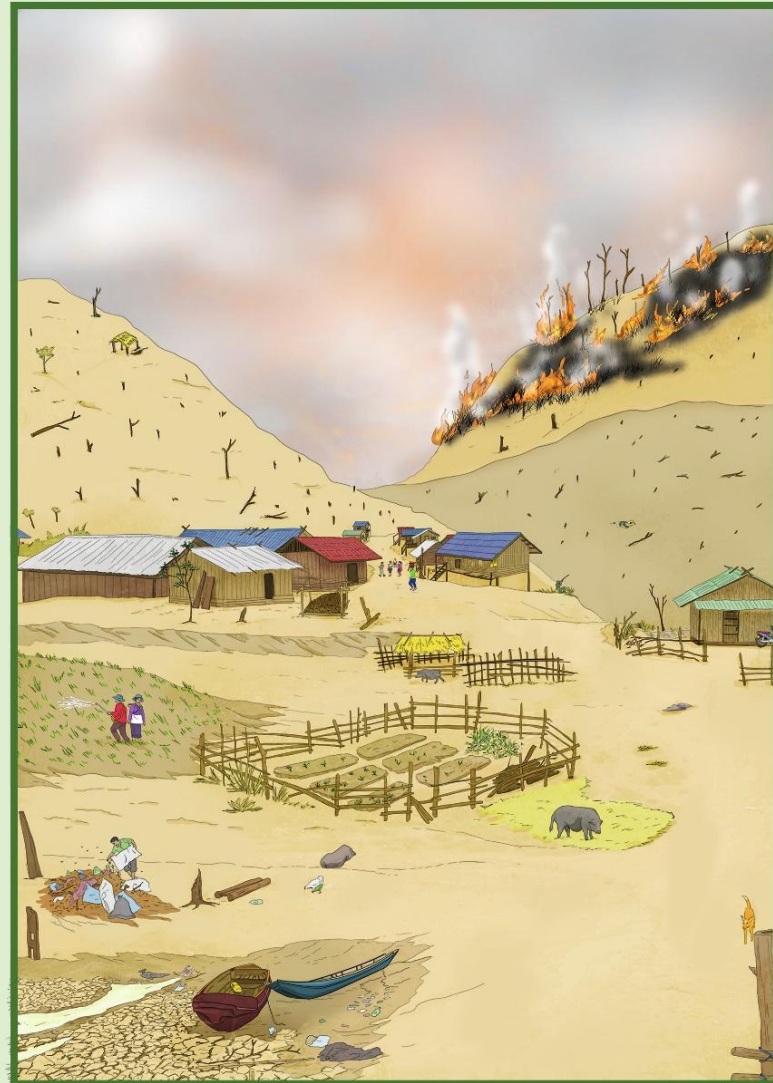
- ◇ Diversified products and income
- ◇ Storage & processing
- ◇ Group solidarity & networking
- ◇ Saving, insurance and credit



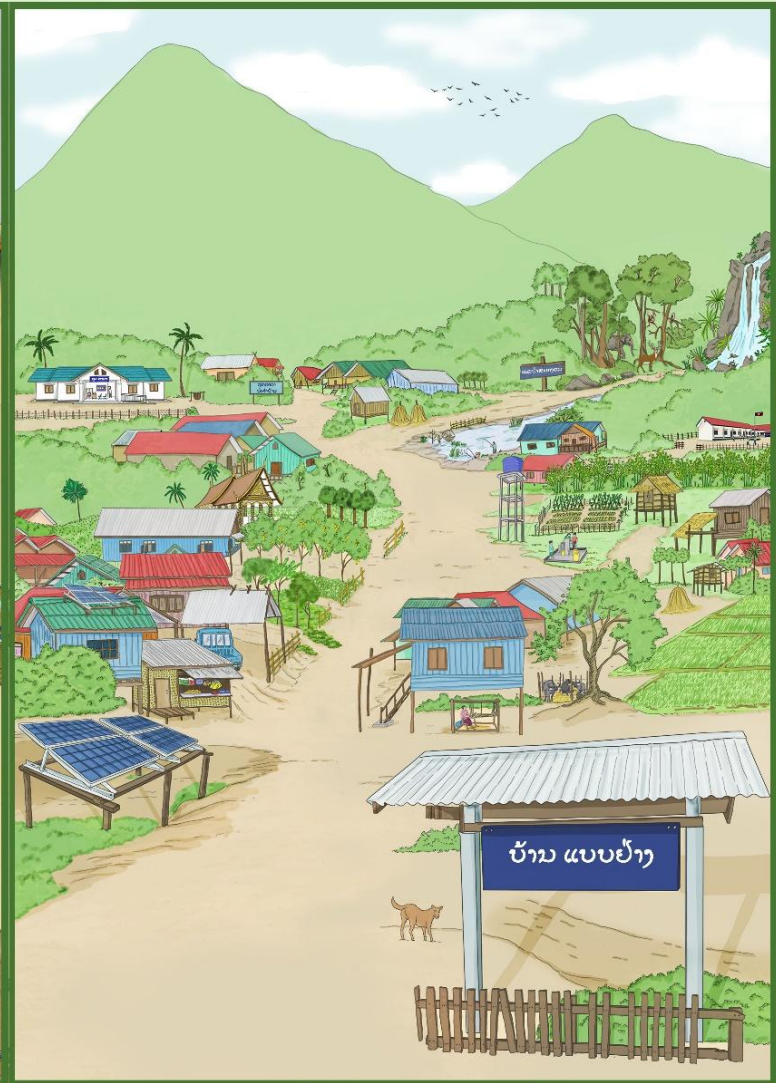
# 10

# Working Together

- We want to work together to overcome these threats.
- We can do this by understanding vulnerability and improving resilience.
- A resilient household, or village is one that is strong and sustainable.



Vulnerable  
community



Resilient  
Community

# 11 Climate Resilient Extension Development (CRED)

The CRED process has already started with this meeting.



The next step is to carry out a more detailed study of vulnerability in this community.



After the assessment, your community will choose what adaptive measures you want to implement.



We will help you implement those adaptive measures by providing training and some of the materials that are needed.

