

# National Multi-Stakeholder Dialogue on Responsible Agricultural Investment

10 November 2021, Lao PDR

## Commercial Investments in Land in the Lao PDR: Land concession inventory and assessment of quality of investment

Phetsaphone Thanasack  
Researcher  
Centre for Development and Environment (CDE)



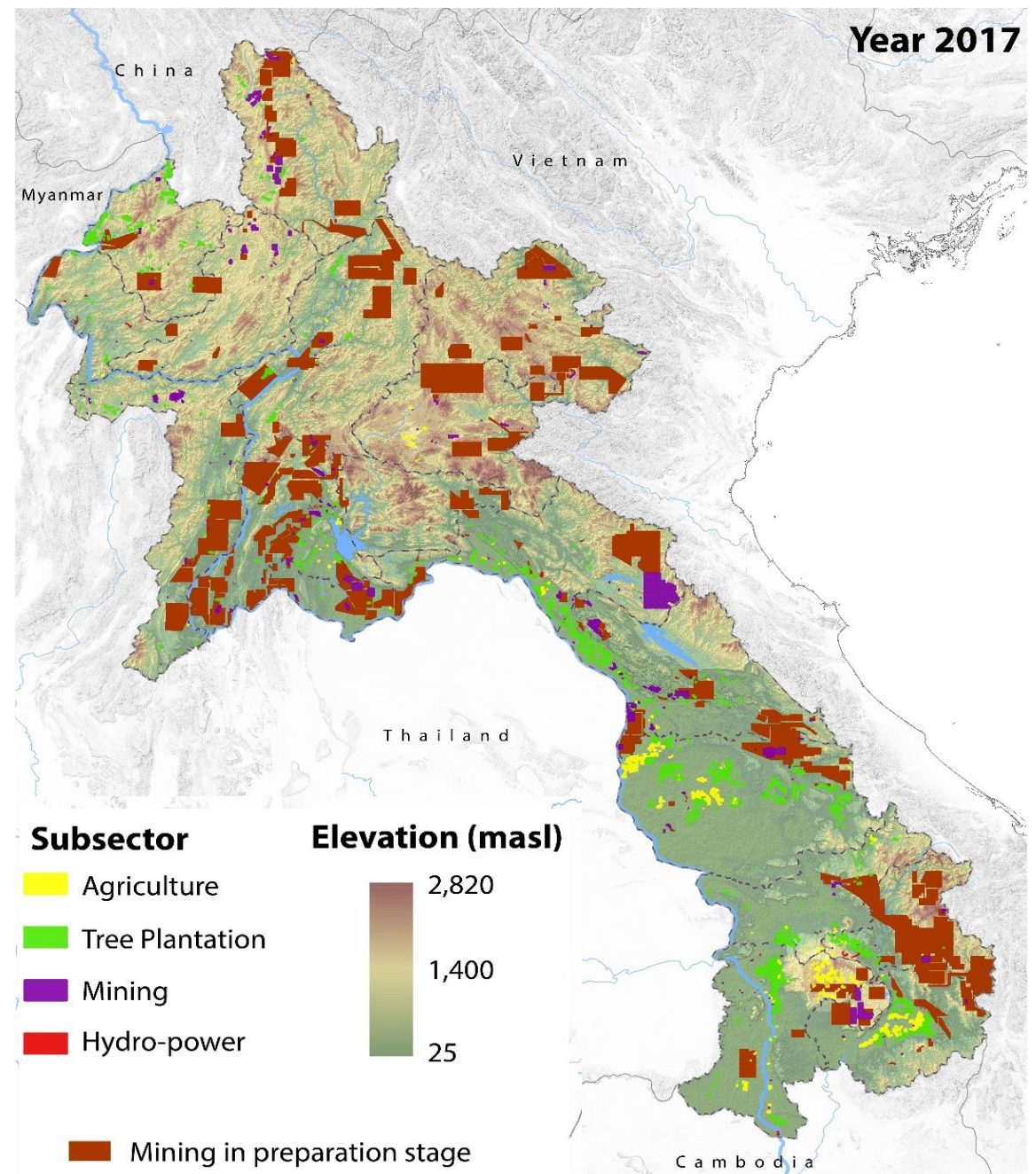
Implemented by



# Do commercial investments in land still matter?

**12  
million ha  
granted for  
concessions**

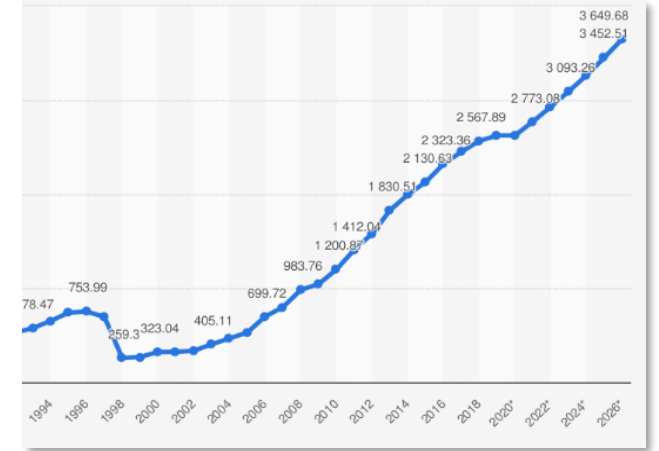
**0.6  
million ha for  
agriculture & tree  
plantations**



# Commercial investments in land as a pathway to development



Turning “empty” land to “effective” use



Capital flows to the country and economic growth

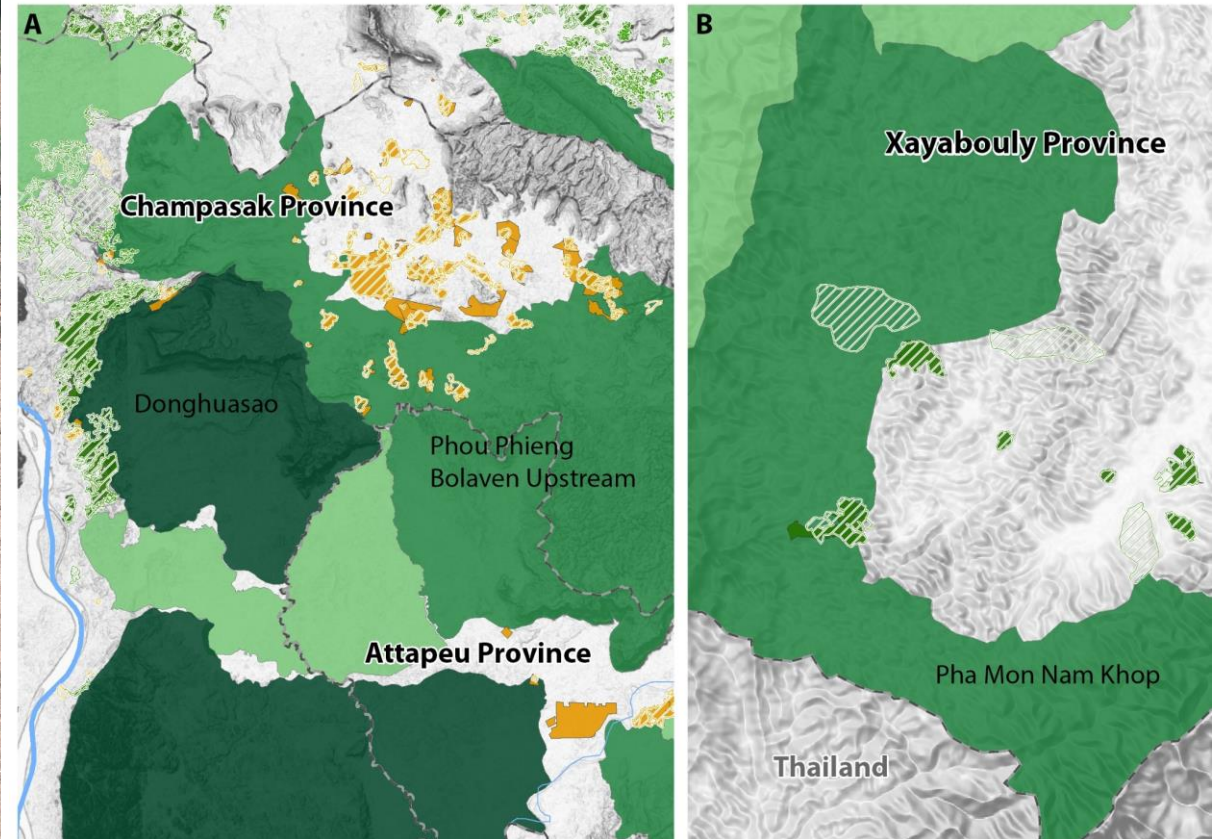


Contributing to rural development through spillovers

# Challenges of commercial investments in land



Planting eucalyptus seedlings in newly cleared land by investor in Khammouan Province. © Anonymous photographer, 2007



Investments inside conservation & protection forest

# Call for a systematic assessment of investment quality

Several moratoria since 2007



ສາທາລະນະລັດ ປະຊາທິປະໄຕ ປະຊາຊົນລາວ  
ສັນຕິພາບ ເອກະລາດ ປະຊາທິປະໄຕ ເອກະພາບ ວັດທະນາຖາວອນ

ນາຍົກລັດຖະມົນຕີ

ເລກທີ..13../ນຍ

ນະຄອນຫຼວງວຽງຈັນ, ວັນທີ..11 ມິຖຸນາ 2012

ຄໍາສັ່ງ

ວ່າດ້ວຍການໂຈະການພິຈາລະນາ ແລະ ອະນຸຍາດໂຄງການລົງທຶນໃໝ່ ສໍາລັບການ  
ຊອກຄົ້ນ ແລະ ສໍາຫຼວດແຮ່ທາດ, ການປູກຢາງພາລາ ແລະ ໄມ້ວິກ ໃນຂອບເຂດທົ່ວປະເທດ

ເຖິງ: - ບັນດາທ່ານ ລັດຖະມົນຕີ, ຫົວໜ້າອົງການທຽບເທົ່າ.

- ທ່ານ ເຈົ້າຄອງນະຄອນຫຼວງວຽງຈັນ ແລະ ບັນດາທ່ານ ເຈົ້າແຂວງໃນທົ່ວປະເທດ.

- ອີງຕາມກົດໝາຍວ່າດ້ວຍລັດຖະບານ ສະບັບເລກທີ 02/ສພຊ, ລົງວັນທີ 06 ພຶດສະພາ 2003 ;
- ອີງຕາມກົດໝາຍວ່າດ້ວຍແຮ່ທາດ ສະບັບເລກທີ 02/ສພຊ, ລົງວັນທີ 20 ທັນວາ 2011 ;
- ອີງຕາມກົດໝາຍວ່າດ້ວຍການສົ່ງເສີມການລົງທຶນ ສະບັບເລກທີ 02/ສພຊ, ລົງວັນທີ 08 ກໍລະກົດ 2009 ;



ສາທາລະນະລັດ ປະຊາທິປະໄຕ ປະຊາຊົນລາວ  
ສັນຕິພາບ ເອກະລາດ ປະຊາທິປະໄຕ ເອກະພາບ ວັດທະນະຖາວອນ

ນາຍົກລັດຖະມົນຕີ

ເລກທີ 09 /ນຍ

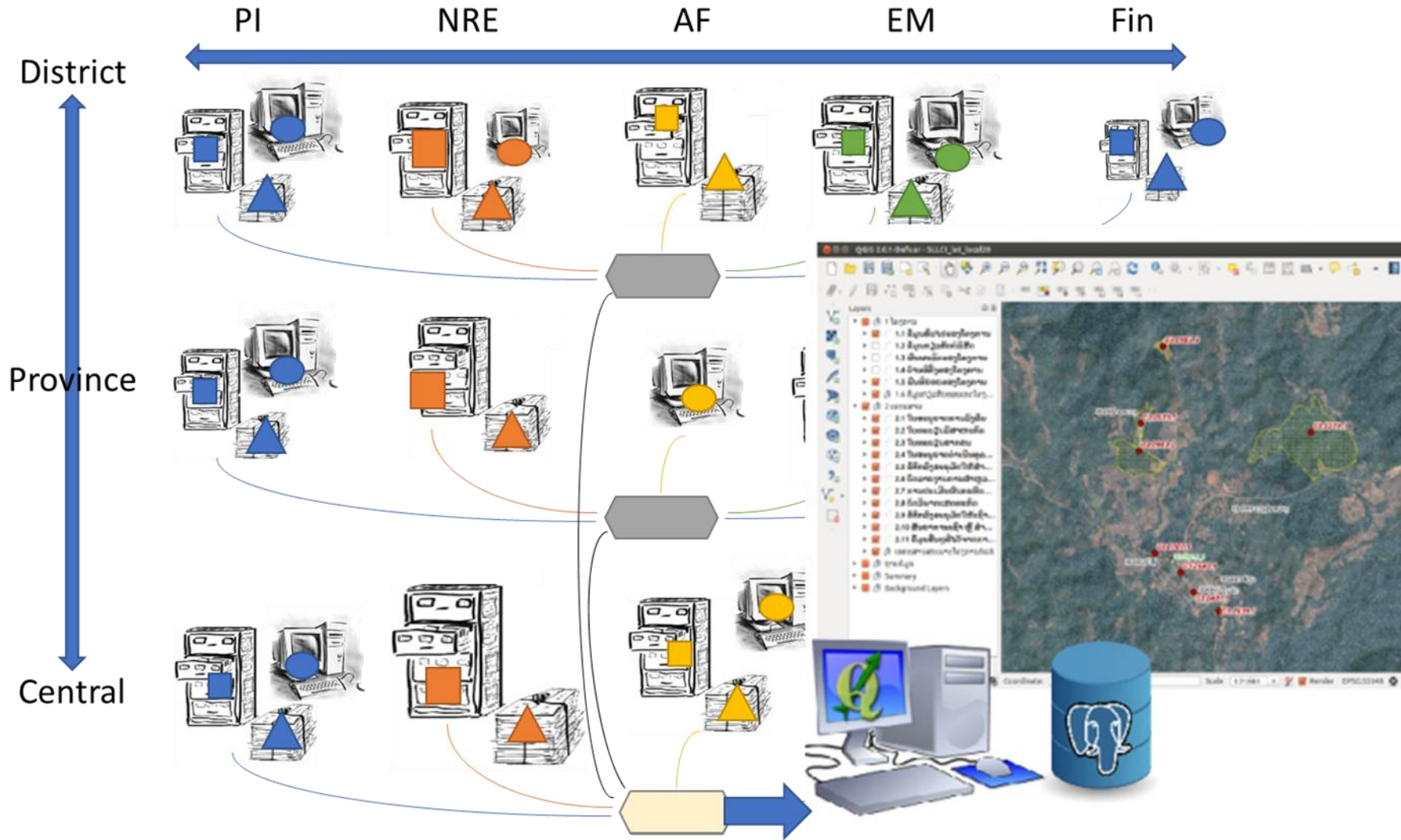
ນະຄອນຫຼວງວຽງຈັນ, ວັນທີ 02.07.2018

ຄໍາສັ່ງ

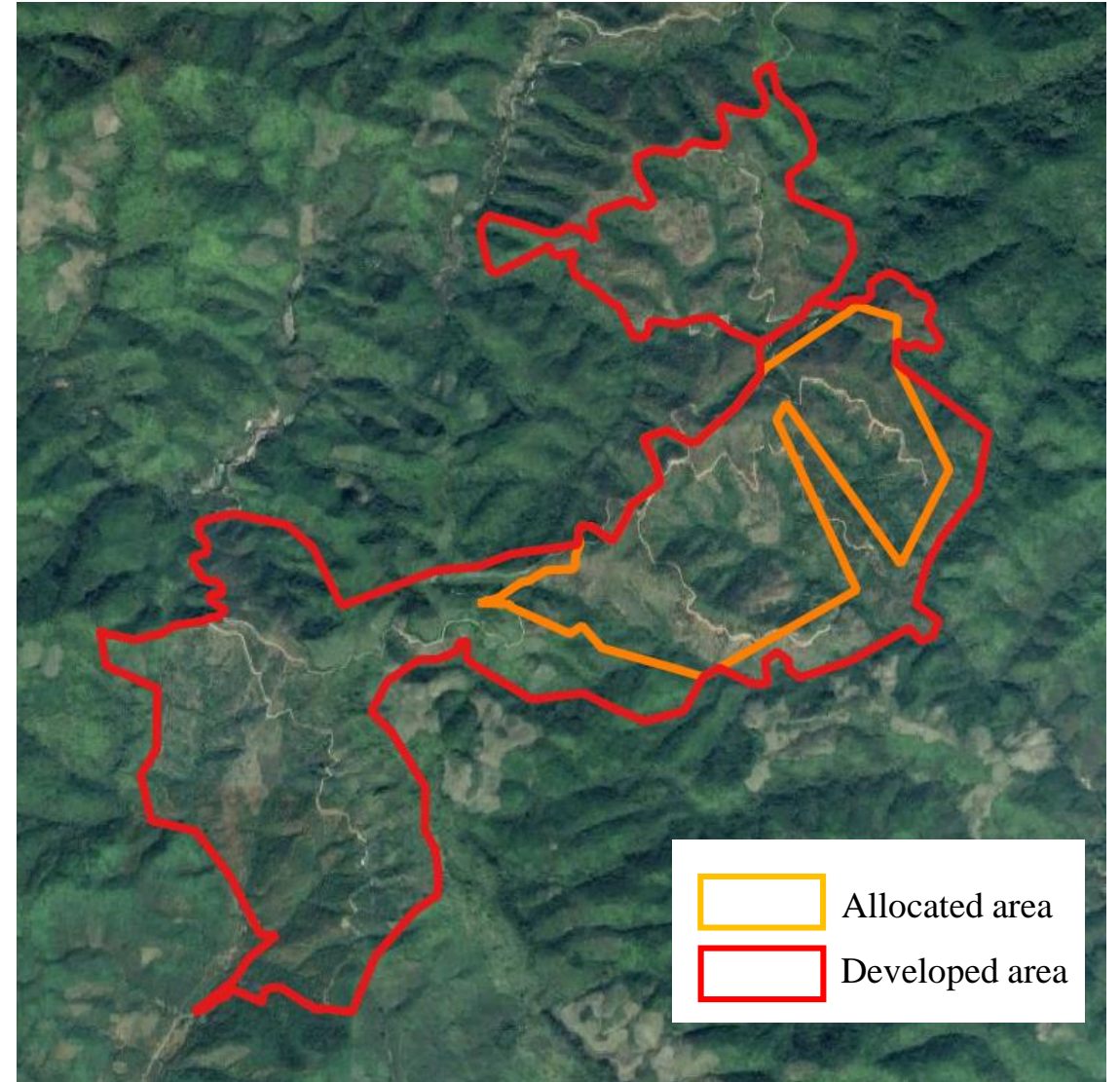
ວ່າດ້ວຍການເພີ່ມທະວີການຄຸ້ມຄອງການນໍາໃຊ້  
ເນື້ອທີ່ດິນ ເພື່ອສໍາປະທານປູກໄມ້ອຸດສະຫະກໍາ ແລະ ພຶດຕ່າງໆ ໃນຂອບເຂດທົ່ວປະເທດ

ເຖິງ: ບັນດາທ່ານ ລັດຖະມົນຕີ, ຫົວໜ້າອົງການລັດທຽບເທົ່າ, ເຈົ້າຄອງນະຄອນຫຼວງວຽງຈັນ ແລະ ທ່ານ  
ເຈົ້າແຂວງ ໃນຂອບເຂດທົ່ວປະເທດ.

Cross-sectorally intergrated joint information collection and analysis set-up



# Participatory approach to review plans vs realities



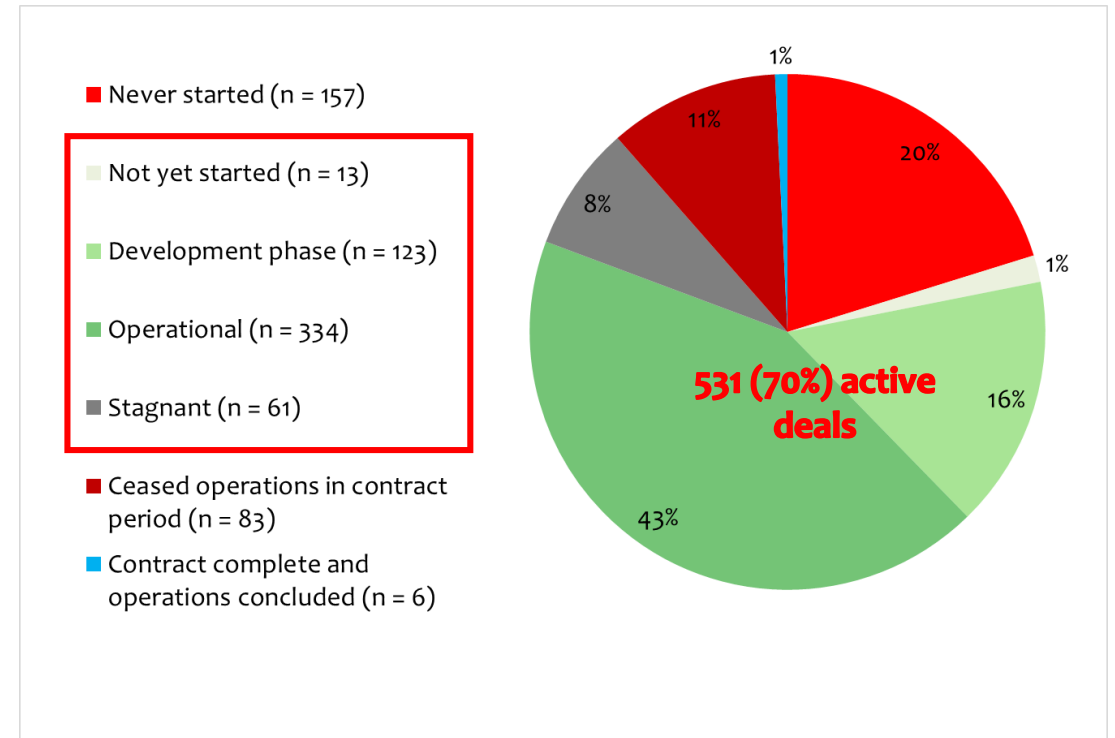
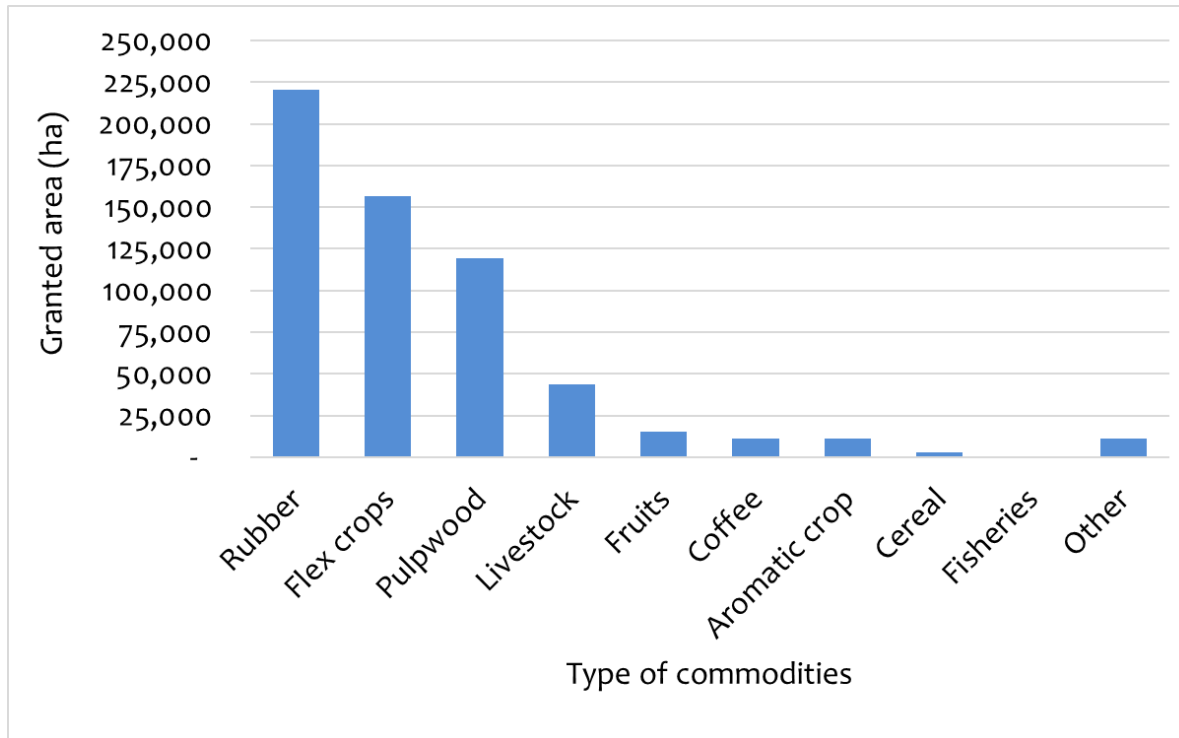
# Extent of commercial investments in land

Sectors	Number of projects	Area granted	Area developed	% of area developed
Mining	622	415,527	242,566	58%
<b>Agriculture</b>	449	<b>238,603</b>	<b>87,657</b>	<b>37%</b>
<b>Tree plantation</b>	328	<b>354,754</b>	<b>216,125</b>	<b>61%</b>
Hydropower	122	10,456	2,900	28%
<b>Sum</b>	<b>1,521</b>	<b>1,019,340</b>	<b>549,248</b>	<b>54%</b>
Mineral prospecting, exploration or feasibility study	237	10,735,077	n.a	n.a
<b>Total</b>	<b>1,758</b>	<b>11,754,417</b>		

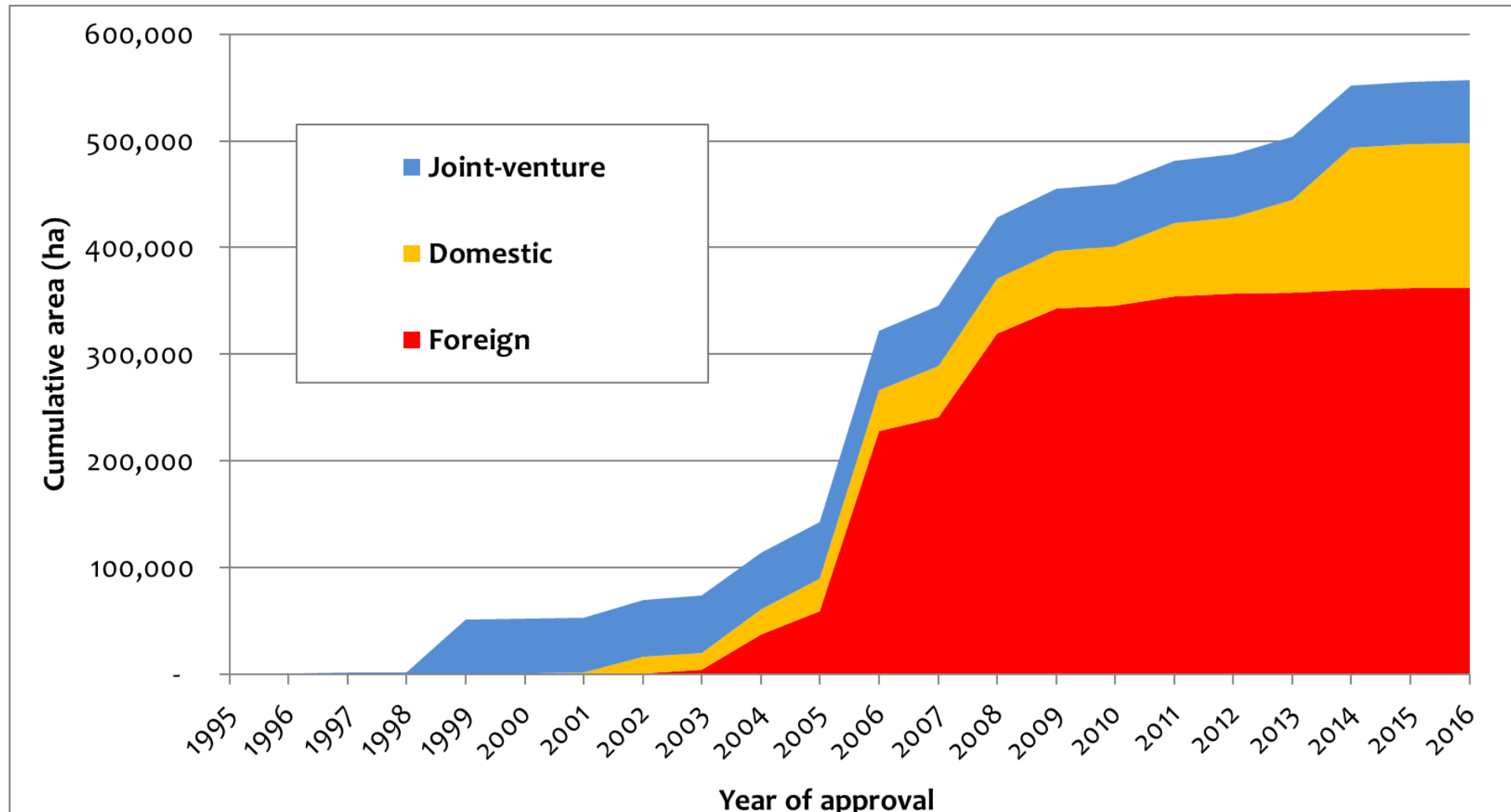
LCI in 2017

# Commodities and implementation status

Granted area by type of commodities

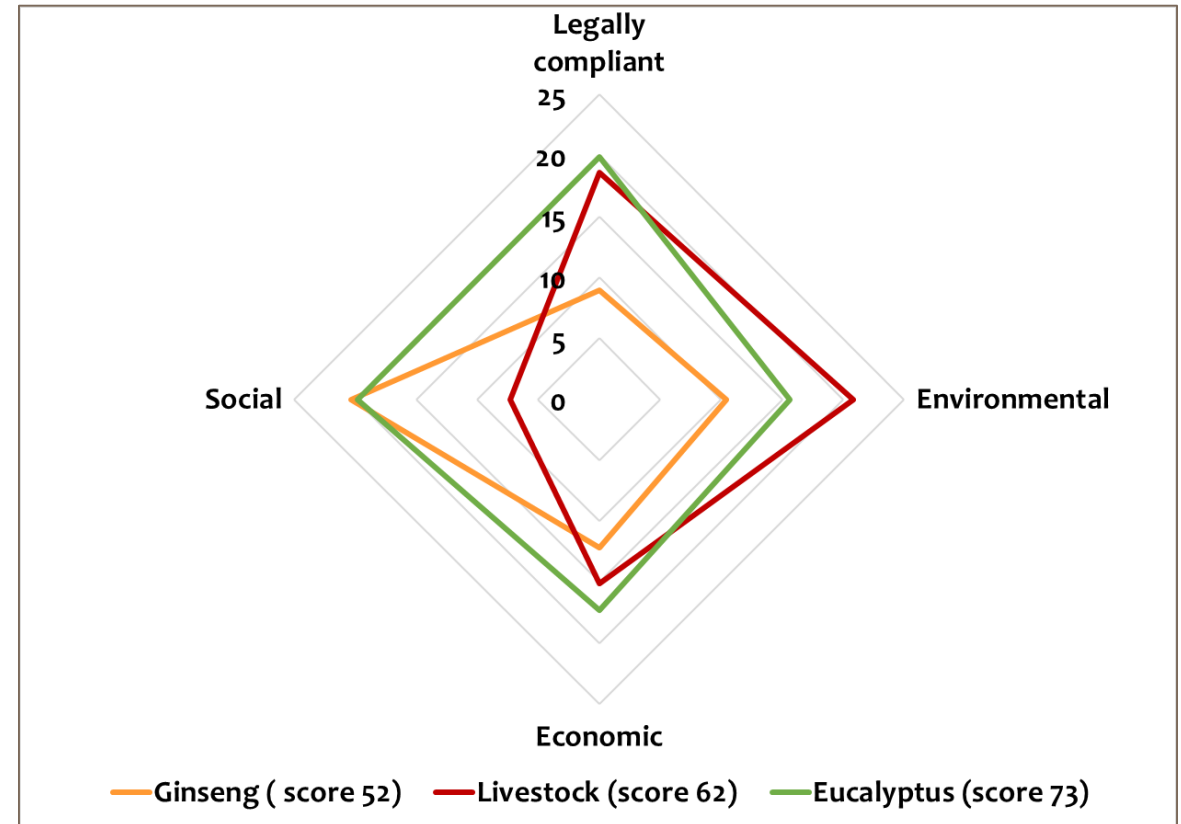
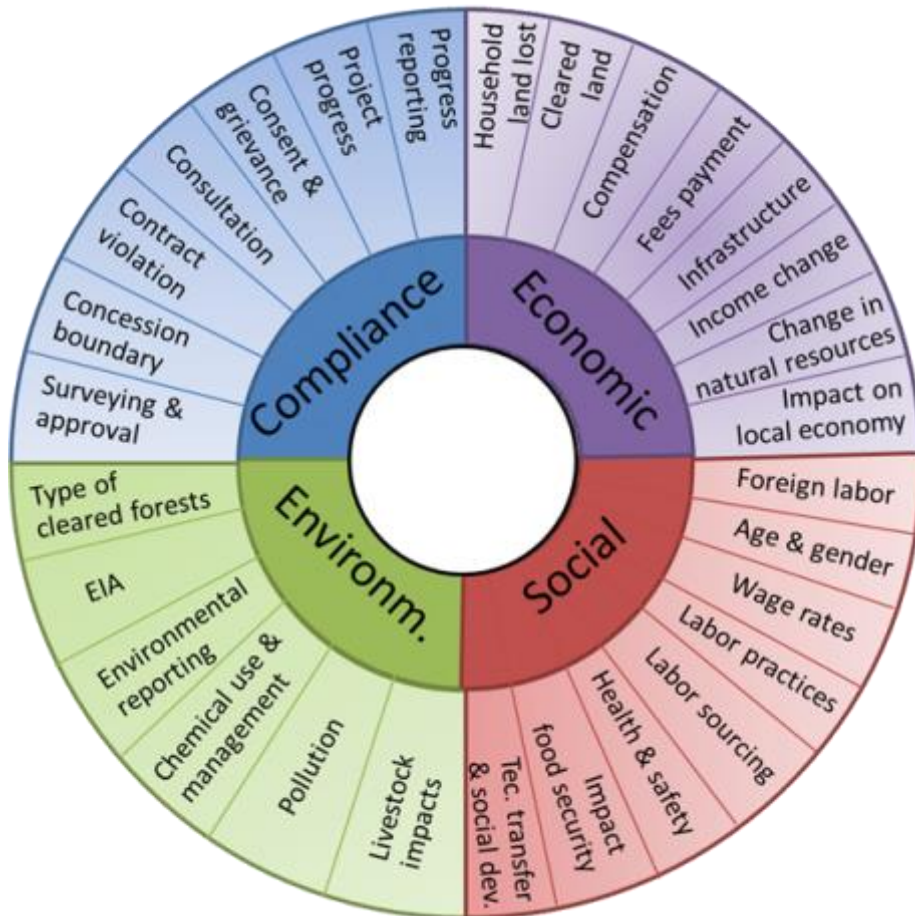


# Trends of commercial investments in land between 1995-2016



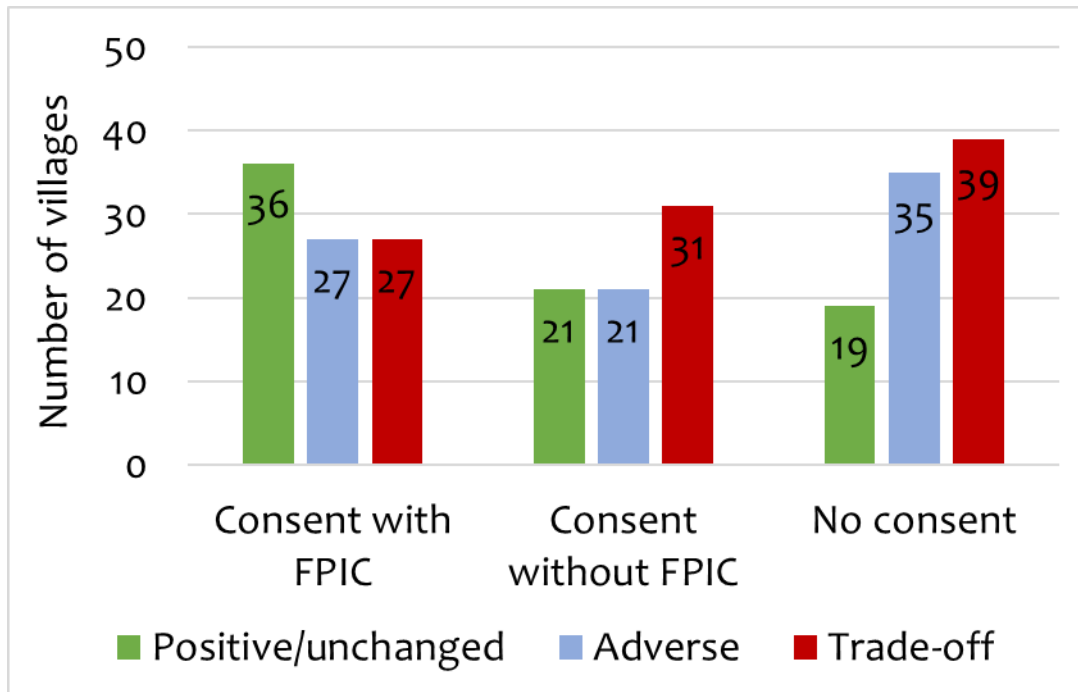
# What is a “good” investment?

Revealing trade-offs among multiple dimensions

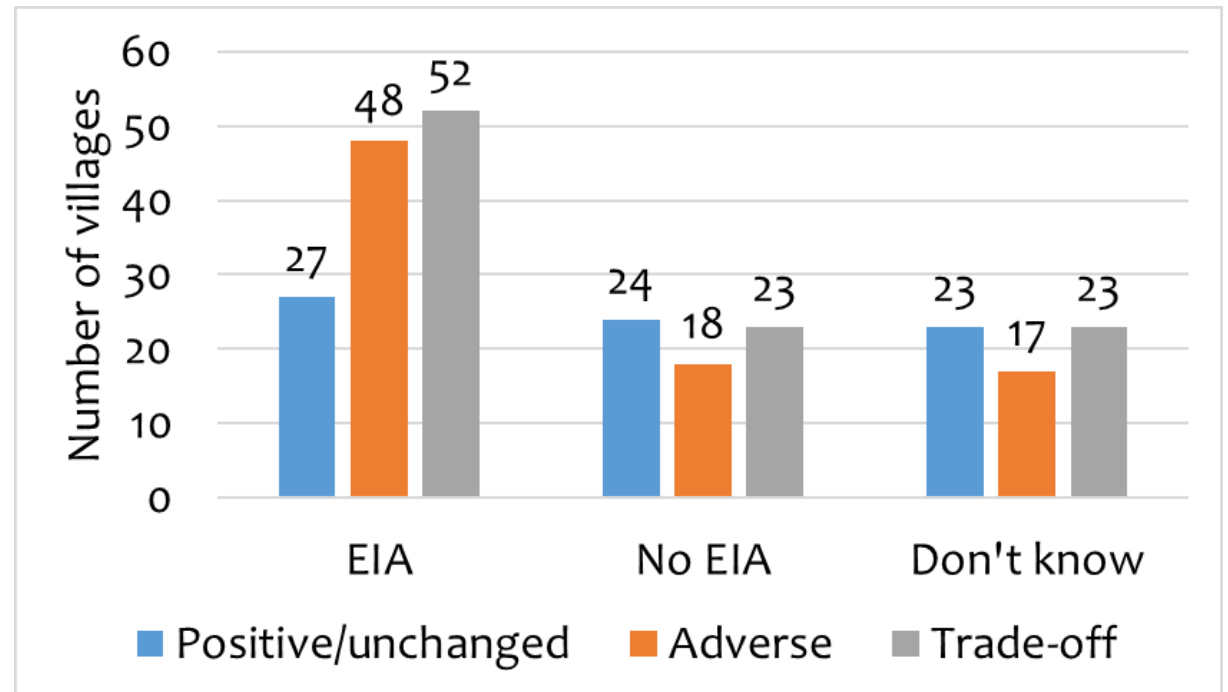


# FPIC, EIA and wellbeing outcomes in the affected villages

## FPIC



## Impact assessment



# Conclusion

## **Trends & impacts:**

- The small domestic investments keep rising.
- Their impacts remain one of challenges for local environment and livelihoods.

## **Pathways to sustainable agricultural investment:**

- Cross-sectoral approach – balancing trade-offs.
- Encourage learning from each other.

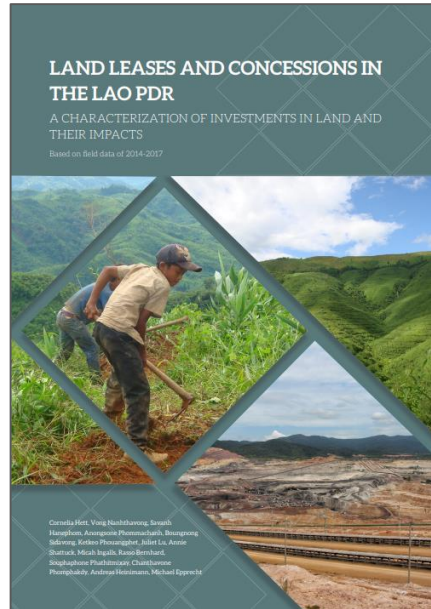
## **FPIC:**

- An important tool to protect land use rights, but not sufficient.
- Contextualize FPIC.

## **EIA:**

- Monitoring through investment cycle.
- Enforcement.

# Further information @ [www.decide.la/](http://www.decide.la/)



**ກະຊວງການເງິນ**  
**Ministère des Finances**



**Lao DECIDE info**  
 www.decide.la  
 Informing Decisions for Sustainable Development

